

TERMINAL BLOCK Connector

Wago LED connectors

KLS2-L52

Specification:

[Poles]:01P

[Contact resistance]: $\leq 20m\Omega$

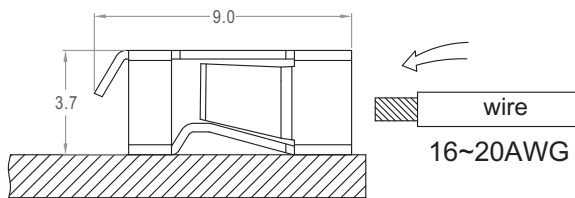
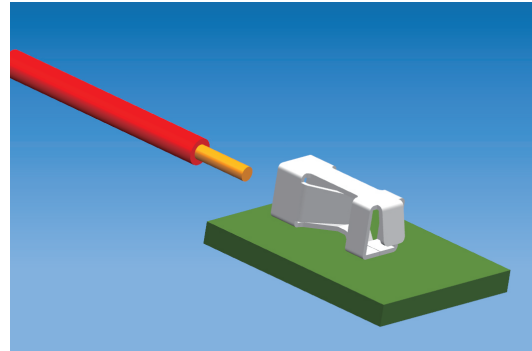
[Insulation resistance]: $\geq 1000M\Omega$

[Rated voltage]:250V AC DC

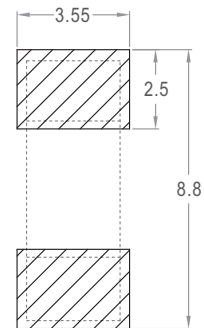
[Rated current]:3.0A AC DC

[Withstand voltage]:1500V AC/minute

[Temperature range]:-45°C ~ +125°C

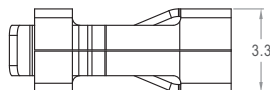
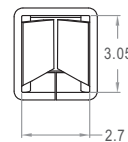
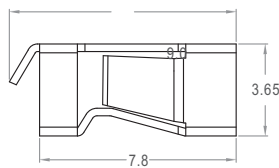


Assembly Layout



SMT type

L52



ORDER INFORMATION

Product NO.: KLS2-L52

Pos. NO. _____

Series No. _____