



KLE ELECTRONIC CO; LTD

WWW.KLSELE.COM

## SMD PCB terminal block; 0.5 mm<sup>2</sup>; Pin spacing 3 mm; 1-pole; PUSH WIRE, in tape-and-reel packaging

The ideal solution for extremely small LED modules in particular.



2P

### Item description:

- With a mere thickness of only 2.72 mm, 3.00 mm pin spacing
- This PCB terminal block is the smallest product and it reduces the space required for the connection technology
- Wire cross sections from AWG 26 – AWG 22, solid conductors
- Rated data 275 V, 800V/2 (III), 2 A
- Number of poles : 1P / 2P / 3P
- Material : housing-UL 94V-0 / Contact: Phosphor bronze with Zn plating

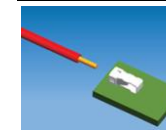
Series: L-KLS2-L83

### Choice : 1 pole / 2 poles / 3 poles



## Other Connector solutions for LED Lighting

### • Low cost solution

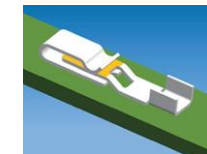


24–26AWG



Bottom wire insert

### • AVX replacement solution



### • WAGO Replacement solution



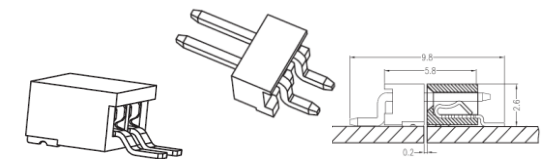
WAGO 2059

WAGO 2060

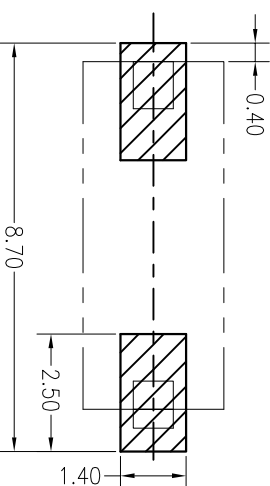
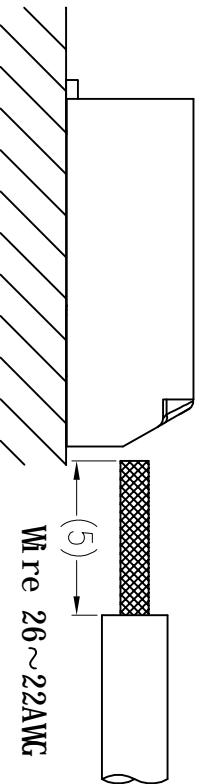
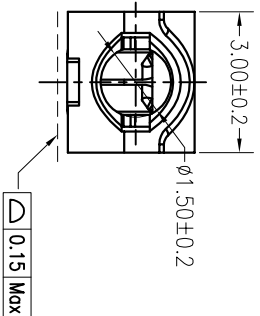
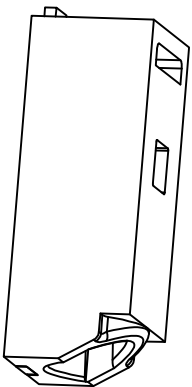
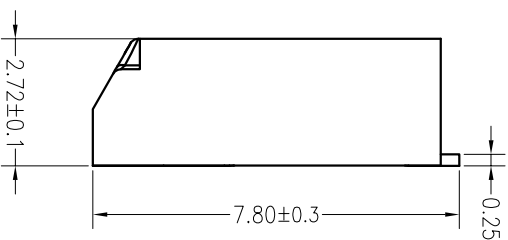
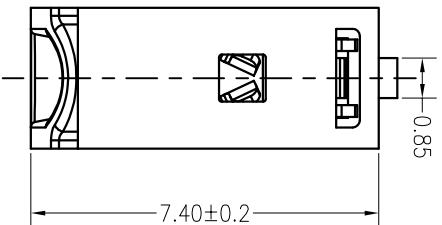
WAGO 2061

Pitch: 6.00mm

### • Board to Board connection solution



Assembly Layout



Board Layout

主要技术参数 Main Specifications

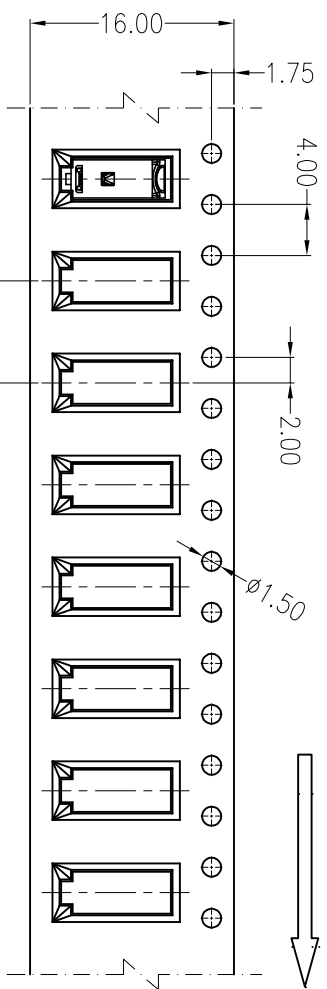
线 数 (Poles): 01 to 03  
 接触电阻 (Contact resistance):  $\leq 20m\Omega$   
 绝缘电阻 (Insulation resistance):  $\geq 800M\Omega$   
 额定电压 (Rated voltage): 275V AC DC  
 额定电流 (Rated current): 2.0A AC DC  
 耐 电 压 (Withstand Voltage): 800V AC/mil nute  
 温度范围 (Temperature Range):  $-40^{\circ}C \sim +110^{\circ}C$

Remark: Analogue WAGO 2059-301/998-403

B	CONTACT	1 PCS	PhosphorBronze	Mdite Sn
A	HOUSING	1 PCS	LOP/PAQT	UL 94V-0, COLOUR:BEIGE
ITEM		COMPONENT	QTY	MATERIAL
KLS ELECTRONIC CO, LTD				
TITLE: -		3.0mmPITCH 90°WAFER SMT TYPE		
X.±0.5	X.±5'	USE:	CUSTOMER	
X.±0.3	X.±2'	APPD:	邵敬和	
.XX±0.25	.XX±1'	CHKD:	田 峰	
UNITS: mm		DR:	吴丹平	
SCALE 1:1		SHEET 1 / 1		

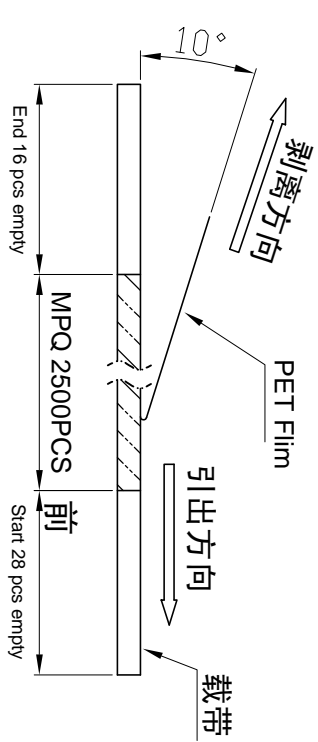
REV	ECN No.	DESCRIPTION	DESIGN	DATE
A0		Release	吴丹平	2017.08.31

REV	ECN No.	DESCRIPTION	DESIGN	DATE
A		Release	吴丹平	2017.12.01

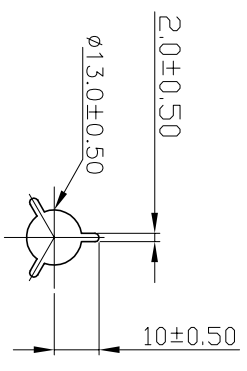
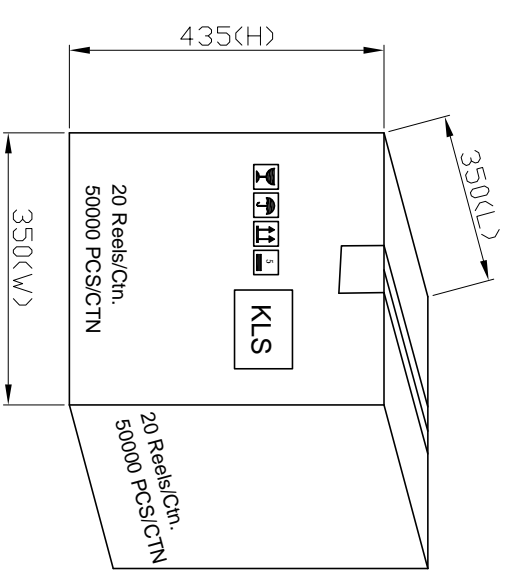
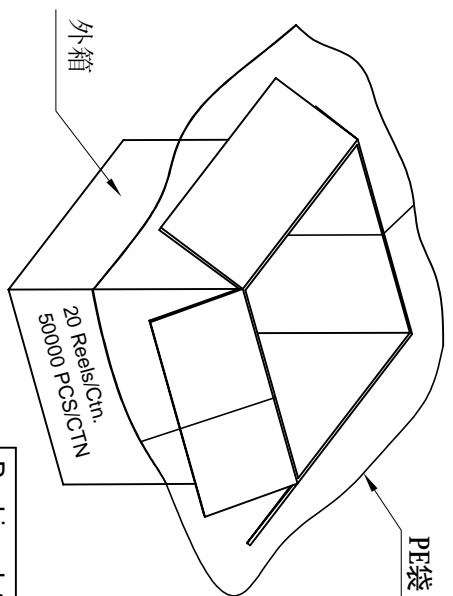
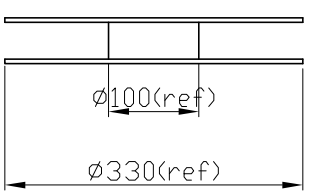
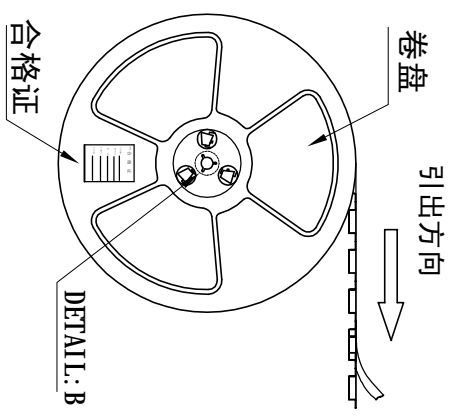


01 CONTACTS

MPQ 2500PCS



(PET膜剥离示意图)



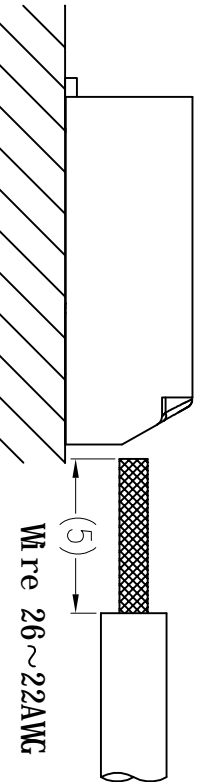
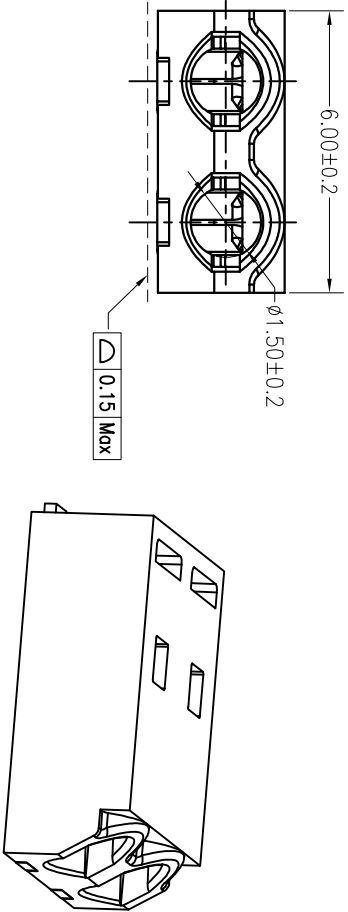
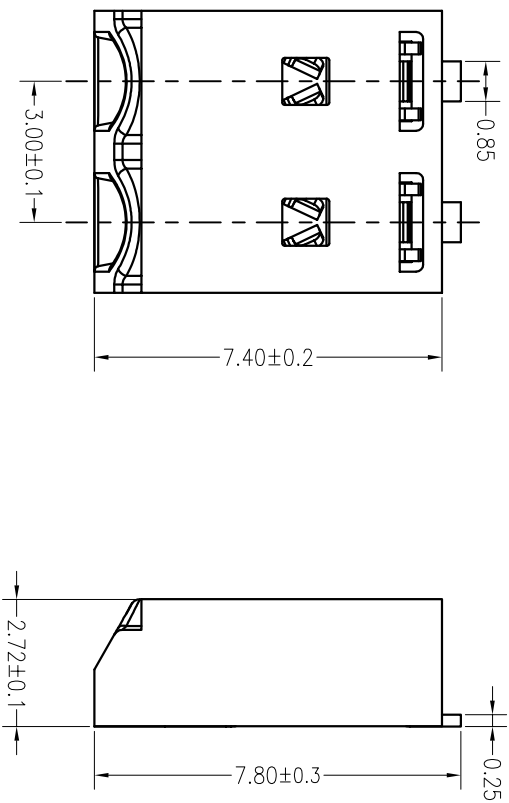
DETAIL:B

包装说明:

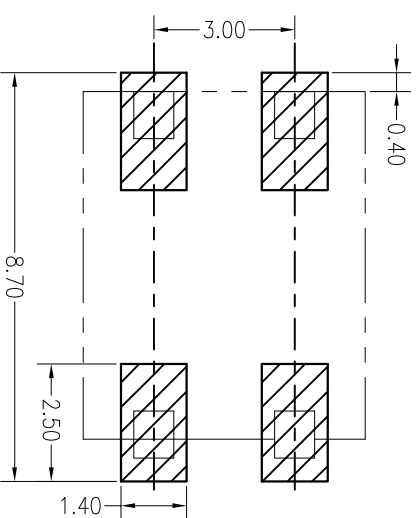
1. 把成品包入卷盘中, 每盘装2500PCS, 卷盘上贴上合格证, 将装好产品的卷盘放进外箱中, 外箱内先套一个大PE袋, 外箱上贴贴上合格证.
2. 所有材料有害物控制需符合RoHS标准.

Packing details for L-KLS2-L83-01P

X.± 0.5	X.±°	USE: MANUFACTURE	PART NO.: L-KLS2-L83-01P
.X± 0.3	.X±°	APPD: 邵敬和	DWG NO.:
.XX±0.25	.XX±°	CHKD: 田峰	SCALE 1:1
UNITS: mm	DR: 吴丹平	SHEET 1/1	



REV	ECN No.	DESCRIPTION	DESIGN	DATE
A0		Release	吴丹平	2017.08.31



### Board Layout

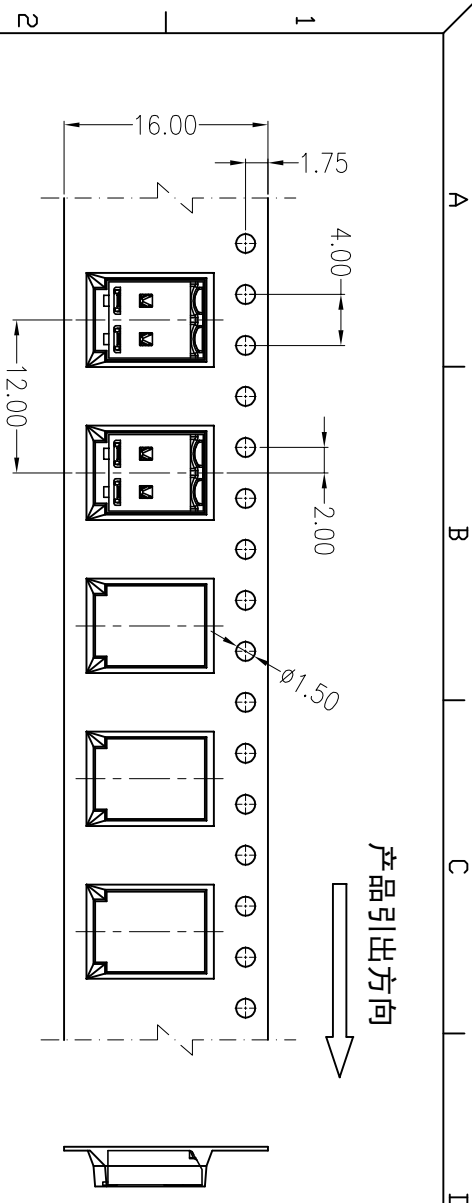
#### 主要技术参数 Main Specifications

线数 (Poles): 01 to 03  
 接触电阻 (Contact resistance):  $\leq 20m\Omega$   
 绝缘电阻 (Insulation resistance):  $\geq 800M\Omega$   
 额定电压 (Rated voltage): 275V AC DC  
 额定电流 (Rated current): 2.0A AC DC  
 耐电压 (Withstand Voltage): 800V AC/mi nute  
 温度范围 (Temperature Range):  $-40^{\circ}C \sim +110^{\circ}C$

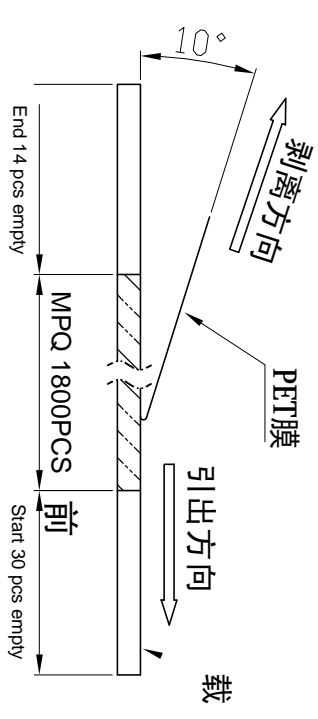
Remark: Analogue WAGO 2059-302/998-403

ITEM	COMPONENT	QTY	MATERIAL	FINISH
A	HOUSING	2 PCS	PhosphorBronze	Matte Sn
B	CONTACT	2 PCS		

KLS ELECTRONIC CO, LTD		TITLE: -	
X.±0.5	X.±5'	USE: CUSTOMER	PART NO.: L-KLS2-L83-02P
X.±0.3	X.±2'	APPD: 邵敬和	DWG NO.:
.XX±0.25	.XX±1'	CHKD: 田峰	SCALE 1:1
---	---	DR: 吴丹平	SHEET 1/1



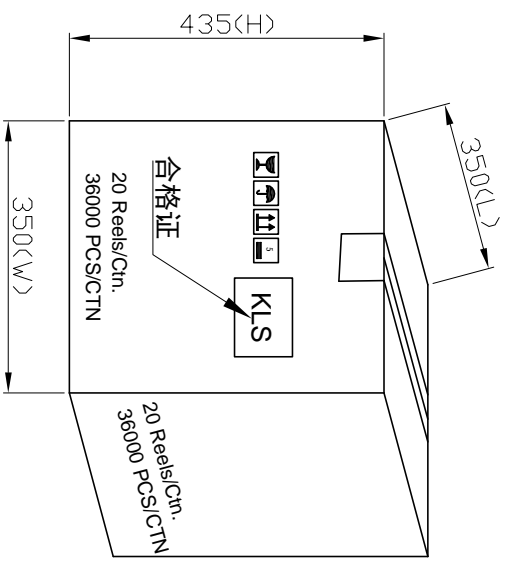
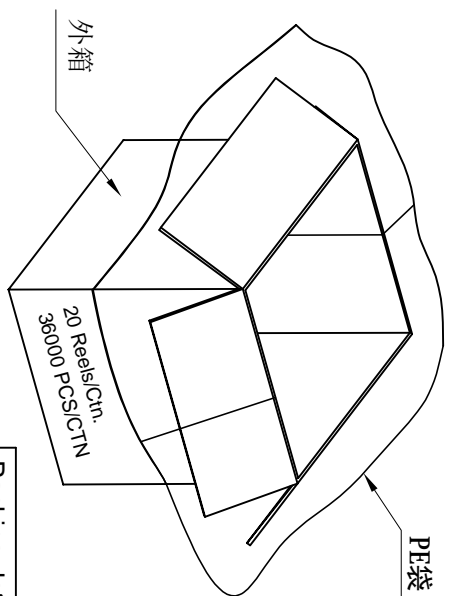
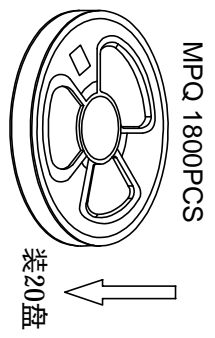
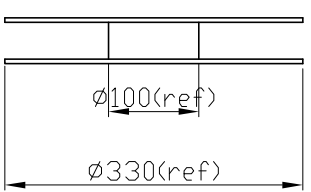
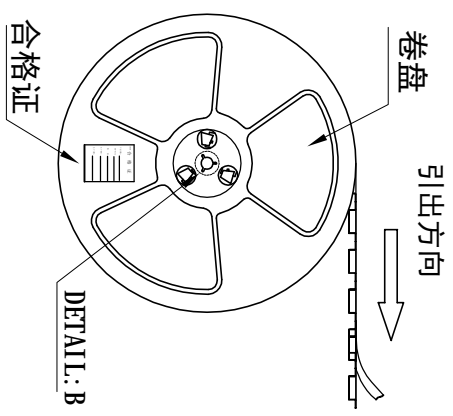
产品引出方向



(PET膜剥离示意图)

End 14 pos empty

Start 30 pos empty



DETAIL: B

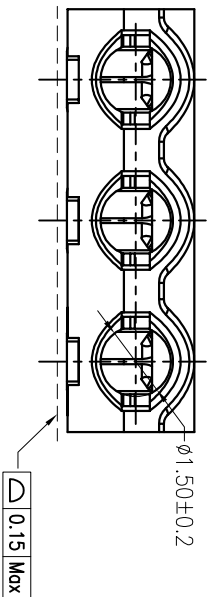
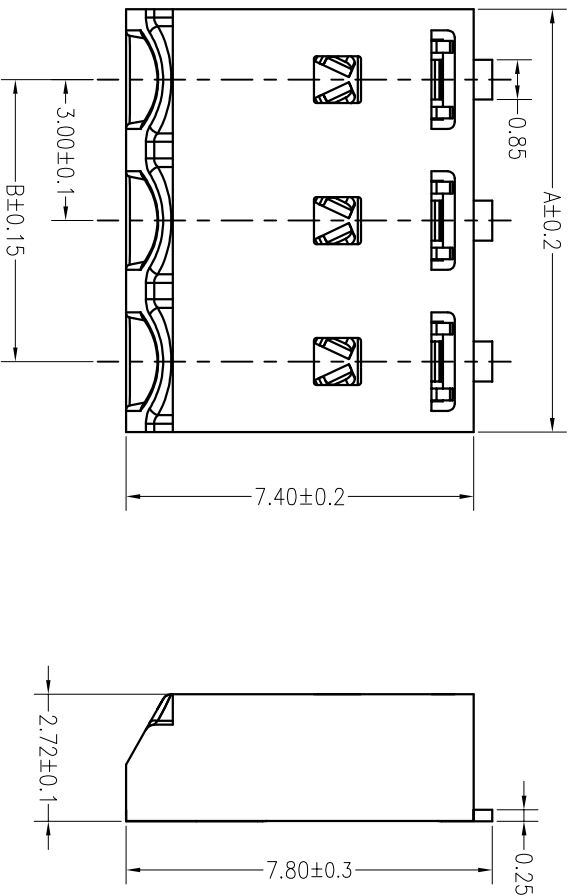
包装说明:

1. 把成品包入卷盘中, 每盘装1500PCS, 卷盘上贴上合格证, 将装好产品的卷盘放进外箱中, 外箱内先套一个大PE袋, 外箱上贴贴上合格证.
2. 所有材料有害物控制需符合RoHS标准.

Packing details for L-KLS2-L83-02P

X.± 0.5	X.±°	USE: MANUFACTURE	PART NO.: L-KLS2-L83-02P
X.± 0.3	X.±°	APPD: 邵敬和	DWG NO.:
.XX±0.25	.XX±°	CHKD: 田峰	SCALE 1:1
UNITS: mm	DR: 吴丹平	TITLE:	SHEET 1/1

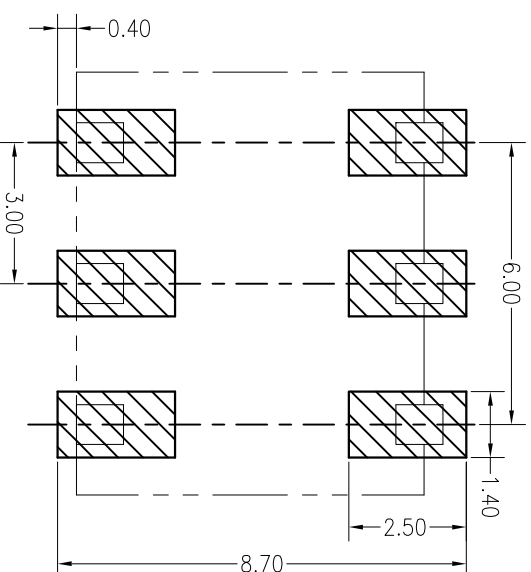
REV	ECN No.	DESCRIPTION	DESIGN	DATE
A		Release	吴丹平	2017.12.01



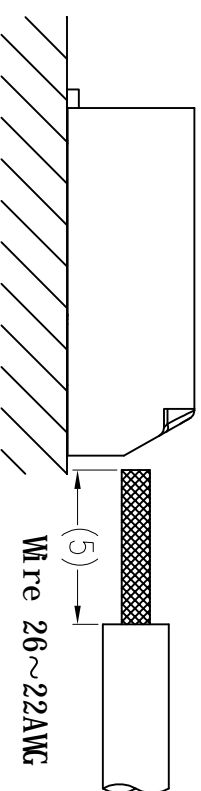
**主要技术参数 Main Specifications**

线数 (Poles): 01 to 03  
 接触电阻 (Contact resistance):  $\leq 20m\Omega$   
 绝缘电阻 (Insulation resistance):  $\geq 800M\Omega$   
 额定电压 (Rated voltage): 275V AC DC  
 额定电流 (Rated current): 2.0A AC DC  
 耐电压 (Withstand Voltage): 800V AC/ml nute  
 温度范围 (Temperature Range):  $-40^{\circ}\text{C} \sim +110^{\circ}\text{C}$

REV	ECN No.	DESCRIPTION	DESIGN	DATE
A0		Release	吴丹平	2017.08.31



**Board Layout**



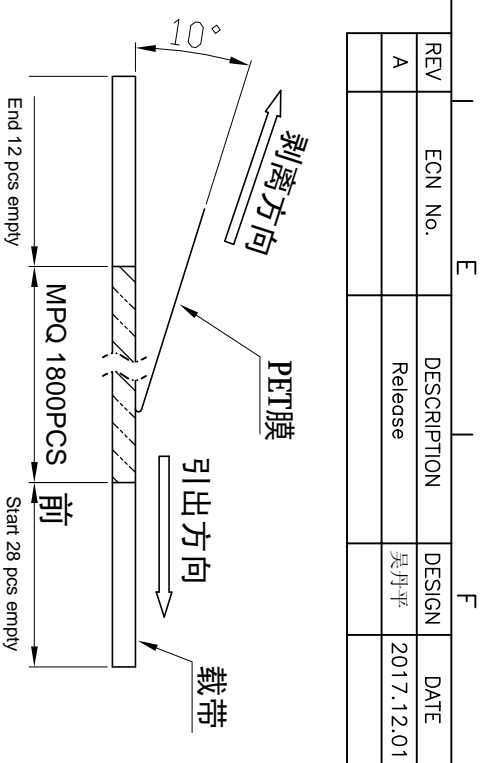
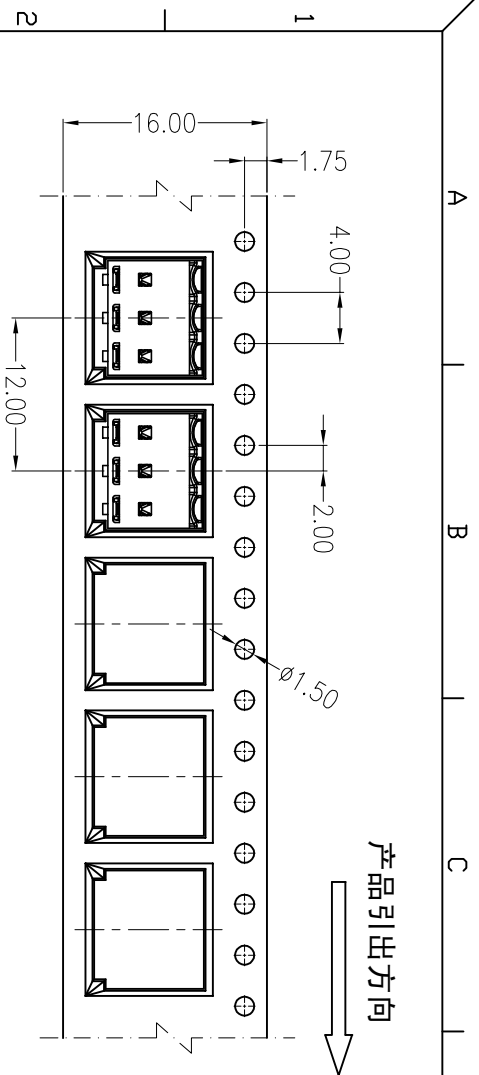
Remark: Analogue WAGO 2059-303/998-403

ITEM	COMPONENT	QTY	MATERIAL	FINISH
A	HOUSING	1~3 PCS	PhosphorBronze	Mdite Sn

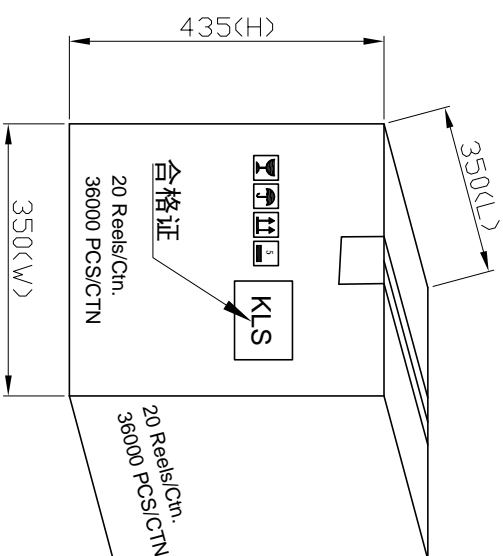
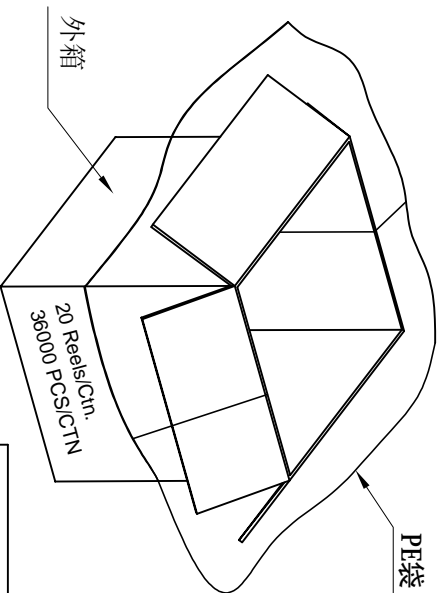
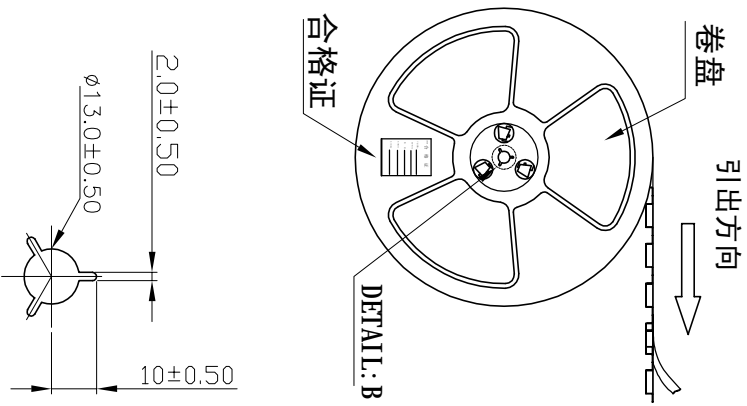
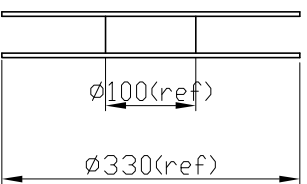
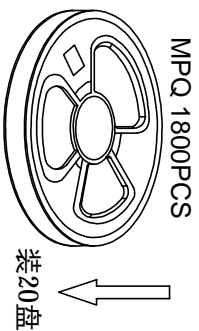
KLS ELECTRONIC CO., LTD		TITLE: -	
3.0mmPITCH 90°WAFER SMT TYPE			

X.±0.5	X.±5'	USE:	CUSTOMER	PART NO.:	L-KLS2-L83-03P
X.±0.3	X.±2'	APPD.:	邵敬和	DWG NO.:	
.XX±0.25	.XX±1'	CHKD.:	田峰	SCALE	1 : 1
		DR:	吴丹平	SHEET	1 / 1

1 2 3 4 5 A B C D E F



(PET膜剥离示意图)



- 包装说明:
1. 把成品包入卷盘中, 每盘装1800PCS, 卷盘上贴上合格证, 将装好产品的卷盘放进外箱中, 外箱内先套一个大PE袋, 外箱上贴贴上合格证.
  2. 所有材料有害物控制需符合RoHS标准.

Packing details for L-KLS2-L83-03P

X.± 0.5	X.±°	USE: MANUFACTURE	PART NO.: L-KLS2-L83-03P
.X± 0.3	.X±°	APPD: 邵敬和	DWG NO.:
.XX±0.25	.XX±°	CHKD: 田峰	SCALE 1:1
⊕	UNITS: mm	DR: 吴丹平	SHEET 1/1

REV	ECN No.	DESCRIPTION	DESIGN	DATE
A		Release	吴丹平	2017.12.01