



# PRODUCT SPECIFICATION

## 产品规格书

<b>Part Name / 产品型号</b>	Plastic Screw Protective Vent
<b>Voir P/N / 沃瑞编码</b>	VV-PO/FVM05022-C1/2/38G
<b>Customer / 客户型号</b>	
<b>Customer P/N / 客户料号</b>	
<b>Issue Date / 发布日期</b>	2016-10-06

<b>Checked / 审核</b>	<b>Prepared / 制作</b>	
<b>Li Zuo Jun</b>	<b>Chen Ming</b>	
<b>Customer Approve / 客户核准</b>		
—		
—		

产品构件	
Body Material	PC
Membrane	e-PTFE
Body Material	Silicone Ring
产品性能	
Airflow A/P	160ml/min; $\Delta p=70\text{mbar}$
WIP	$>40\text{Kpa}$
Temperature Range	$-40^{\circ}\text{C} \sim +125^{\circ}\text{C}$
IP Rate	IP68



**Specification: VV-PO/FVM05022-C1/38G-NM**

PO/FVM05 is a screw vent plug made of PC with e-PTFE porous membrane inserted, whose screw pitch is standard M05\*0.8mm. It is waterproof, gas permeable, resisting UV and salt fog. Through tests, it is proved that it reaches IP68. It gets ROHS approval and widely used around the world.

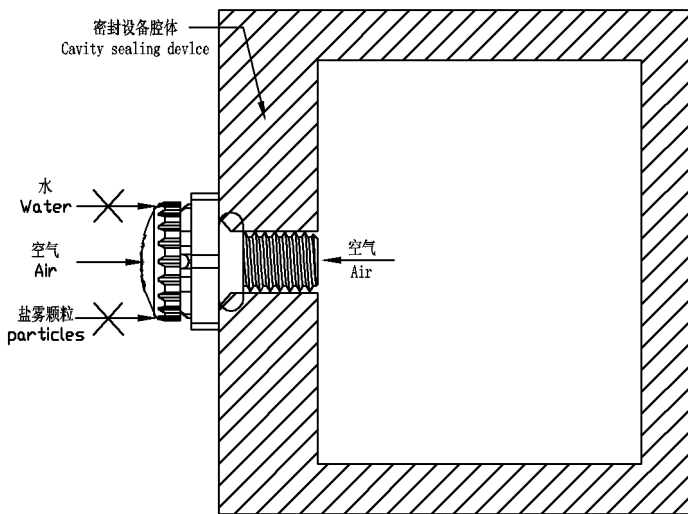
**Application**

It can be applied to industrial dust collector, chemicals packing industry, bleacher, household commodity, LED, telecommunication equipment, solar equipment and automotive industry. This product cannot be applied to highly corrosive or acid-based environment.

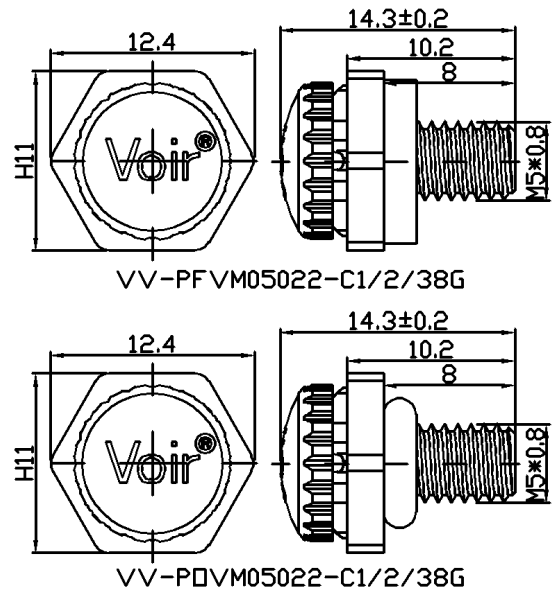
**Benefit for Outdoor Equipment**

1. Lower the tension for the housing and rapidly balancing the pressure.
2. The oleophobic and hydrophobic e-PTFE membrane is chemically inert and UV resistant.
3. Easy installation and maintenance, which just screws into the housing. The silicone ring seals the enclosure to keep the good air tightness. Safe and easy handling.

**Practical Principle**



**Detailed Spec.**

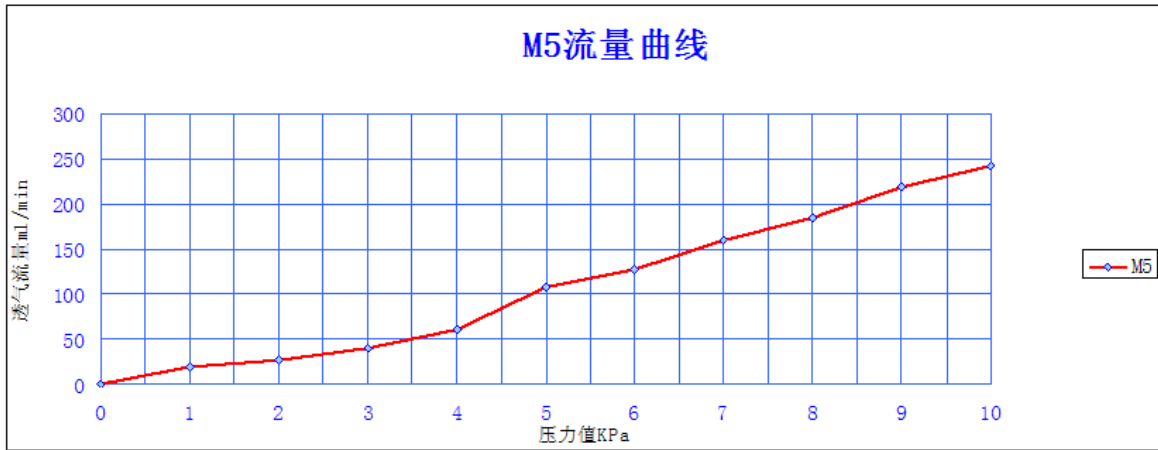


M5 series items as below:

Item	Features
VV-POVM05022-C18G	O-RING /GREY
VV-POVM05022-C28G	O-RING /WHITE
VV-POVM05022-C38G	O-RING /BLACK

Item	Features
VV-PFVM05022-C18G	FLAT-RING/GREY
VV-PFVM05022-C28G	FLAT-RING/WHITE
VV-PFVM05022-C38G	FLAT-RING/BLACK

POV/FM05 Pressure flow chart:



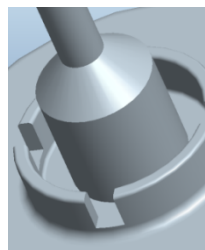
Installation Instruction



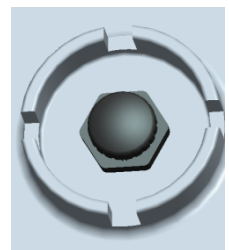
Target-oriented sleeve



Put in the sleeve

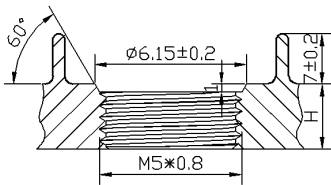


Rotate the sleeve

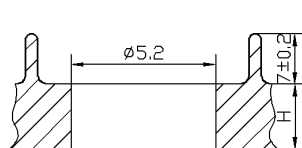


The surface of the shell after installation

Installation suggestion



suggestion1



suggestion2

Specification

Item	material	Spec./mm	Property
VV-PO/FVM05 022-C1/2/38 G	PC	Wench Size: H11 Total Length: 14.3 Screw Length: 8	160ml/min; $\Delta p=70\text{mbar}$

Installation Suggestion :

- 1、H-Thickness of the housing;  $\phi$ -diameter of the straight hole. Suggest installation torque value  $\leq 1.03\text{N/m}$
- 2、When the housing thickness is  $> 3\text{mm}$ , it is suggested punching M5\*0.8 threaded hole and use silicone O-ring to seal the entrance. Please refer to Suggestion 1
3. When the housing thickness is  $\leq 3\text{mm}$ , it is suggested punching  $\phi 5.2$  straight hole and lock with nut. Flat silicone ring would seal the entrance. Please refer to Suggestion 2

Customization: VoirTech's protective vents can be customized to match your products in spec., color, property and even provide specific solution. For more information, please contact us.