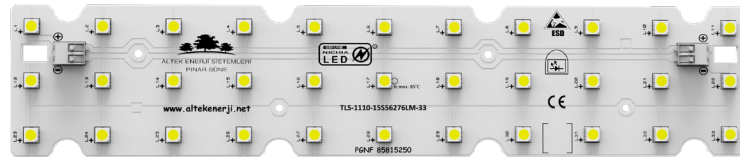




## PRODUCT PHOTO



## SPECIFICATIONS

- Default driving method is constant current input
- CCT Range from 2200K up to 6500K
- This module is standard and can be connected as 11 Series 3 Parallel.
- Luminous flux range from 2816 lm to 22532 lm
- Efficacy of the module up to 205 lm/W
- CRI 80 is standard, CRI 70 and CRI 90 are available
- Outstanding system color tolerance MacAdam 3 over the full operating area
- Simple installation (e.g. screw)
- Long life-time > 60,000 hours
- 5 years guarantee at specified conditions



For your orders please call us:

**+90 444 27 33**

## APPLICATIONS



High Bay Lighting



Low Bay Lighting



Downlight

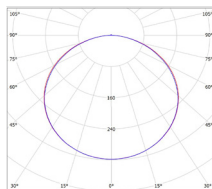


Flood Light



Street Lighting

## PHOTOMETRY

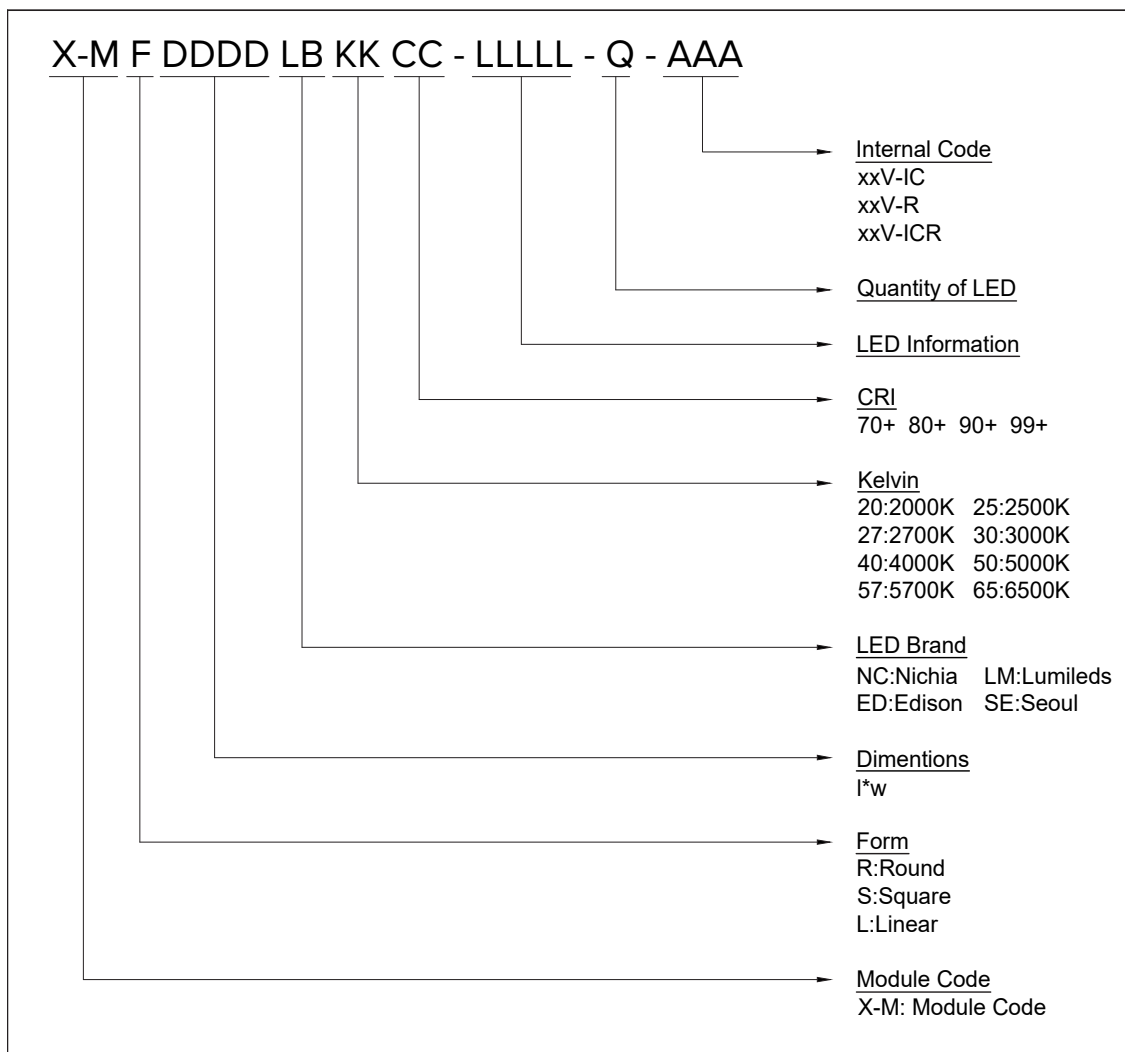


W/O LENS

## TECHNICAL DATA

Beam Angle	120°
Ambient temperature range	-25° ~ +55°C
Tc max	85°C
<b>LUXEON 5050 HE 6V</b>	
Max. DC forward current	2400mA
Typical voltage of LED Module at max current	70,4V
Insulation test voltage	2kV
ESD classification	Class 1
Risk group (EN 62471:2008)	2
Type of protection	IP00

## ORDERING INFORMATIONS



## DRIVING CURRENT VS LUMEN OUTPUT SPECIFICATION

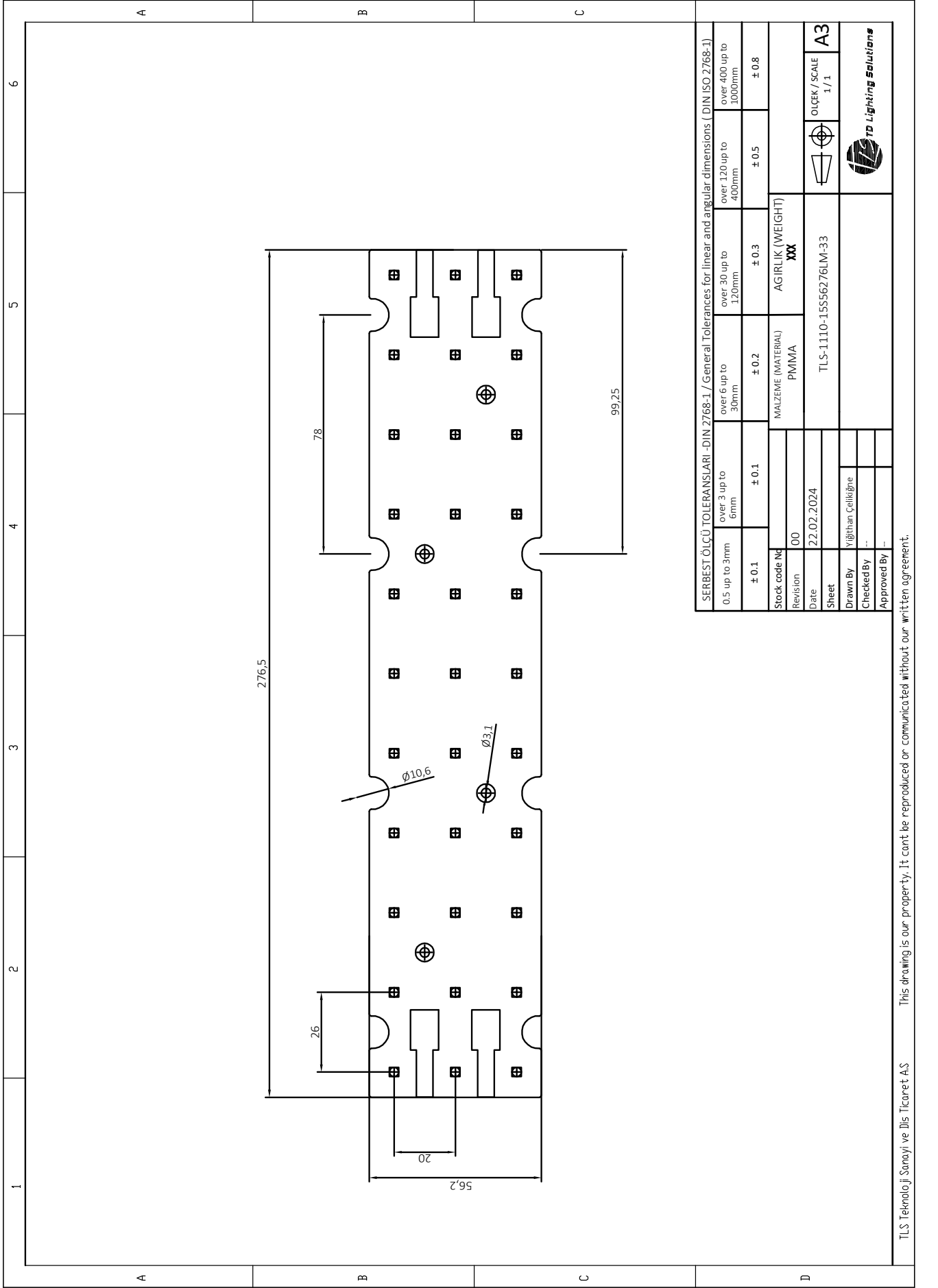
Common Characteristic [@Tj : 85°C] ;			
Module Code	X-ML56276LM4080-5050HE-33		
PCB Material	ALU	Electrical Connection	
Operating Temperature (°C)	-40 ~ +100	Parallel	3
Storage Temperature (°C)	-40 ~ +55	Series	11
Thermal Conductivity (W/m-K)	1>	LED Quantity	33
LED	LUXEON 5050 HE 6V		
Correlated Color Temperature (CCT)	4000K		
Color Rendering Index (CRI)	80+		
Module Operating Voltage (V)	60	61	62
Module Operating Current (mA)	501	699	1050
Branch Operating Current (mA)	167	233	350
Module Power (W)	29,95	42,45	65,35
Module Light Output (lm)	5.900	8.108	11.894
Module Efficiency (lm/W)	197	191	182

The table below shows how to Module Light Output changes depending on CCT (K)

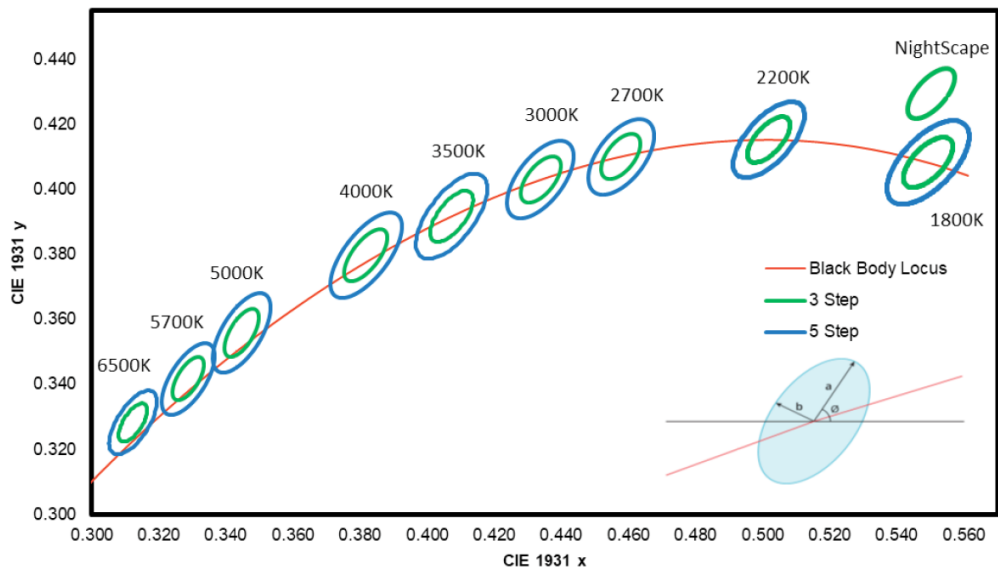
LED	Lumen Output Multiplier							
	2200K (CRI 80)	2700K (CRI 80)	3000K (CRI 80)	3500K (CRI 80)	4000K (CRI 80)	5000K (CRI 80)	5700K (CRI 80)	6500K (CRI 80)
LUXEON 5050 HE 6V	0,7798	0,8869	0,925	0,974	1	1,001	0,9969	0,9938

Relative luminous intensity versus CCT (K)

## X-ML56276LM4080-5050HE-33 MECHANICAL DRAWINGS



## CCT AND BINNING INFORMATION



## LEGAL NOTICE

Product information provided by TLS Teknoloji Sistemleri San ve Dış Tic AŞ ("TLS") in this document is believed to be correct and accurate. TLS reserves the right to change/correct the specifications and other data or information relating to products without notice but TLS accepts no liability for errors that may appear in this document, howsoever occurring, or liability arising from the use or application of any information or data provided herein. Neither the supply of such information, nor the purchase or use of products conveys any licence or permission under patent, copyright, trademark or other intellectual property right of TLS or third parties.

Products sold by TLS are subject to its standard Terms and Conditions of Sale that are available on request. No warranty is given that products do not infringe the intellectual property rights of third parties, and furthermore, the use of products in certain ways or in combination with TLS, or non-TLS furnished equipments/components may infringe intellectual property rights of TLS.

The purpose of this document is to provide information only and it may not be used, applied or reproduced (in whole or in part) for any purpose nor be taken as a representation relating to the products in question. No warranty or guarantee express or implied is made concerning the capability, performance or suitability of any product, and information concerning possible applications or methods of use is provided for guidance only and not as a recommendation. The user is solely responsible for determining the performance and suitability of the product in any application and checking that any specification or data it seeks to rely on has not been superseded.

Products are intended for normal commercial applications. For applications requiring unusual environmental requirements, extended temperature range, or high reliability capability (e.g. military, or medical applications), special processing/testing/conditions of sale may be available on application to TLS.

### CONTACT

#### **TLS Teknoloji Sistemleri San ve Dış Tic AŞ**

Akçaburgaz Mahallesi 3080. Sokak No:5 Esenyurt / İstanbul / TURKEY

info@tsteknoloji.com  
+90 444 27 33