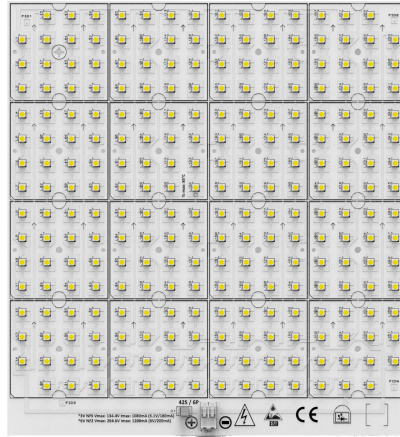


PRODUCT PHOTO



SPECIFICATIONS

- Default driving method is constant current input
- CCT Range from 2000°K up to 6500°K
- Luminous flux range from 18514 lm to 38341 lm
- Efficacy of the module up to 165 lm/W
- CRI 80 is standart, CRI 70 and CRI 90 are available
- Outstanding system color tolerance MacAdam 3 over the full operating area
- Simple installation (e.g. screw)
- Long life-time > 60,000 hours
- 5 years guarantee at specified conditions



For your orders please call us:
+90 444 27 33

APPLICATIONS



Street Lighting

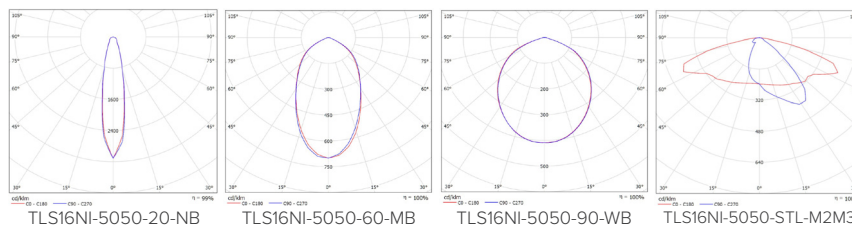
Flood Lighting

Gas Station
Lighting

Tunnel Lighting

High Bay Lighting

PHOTOMETRY



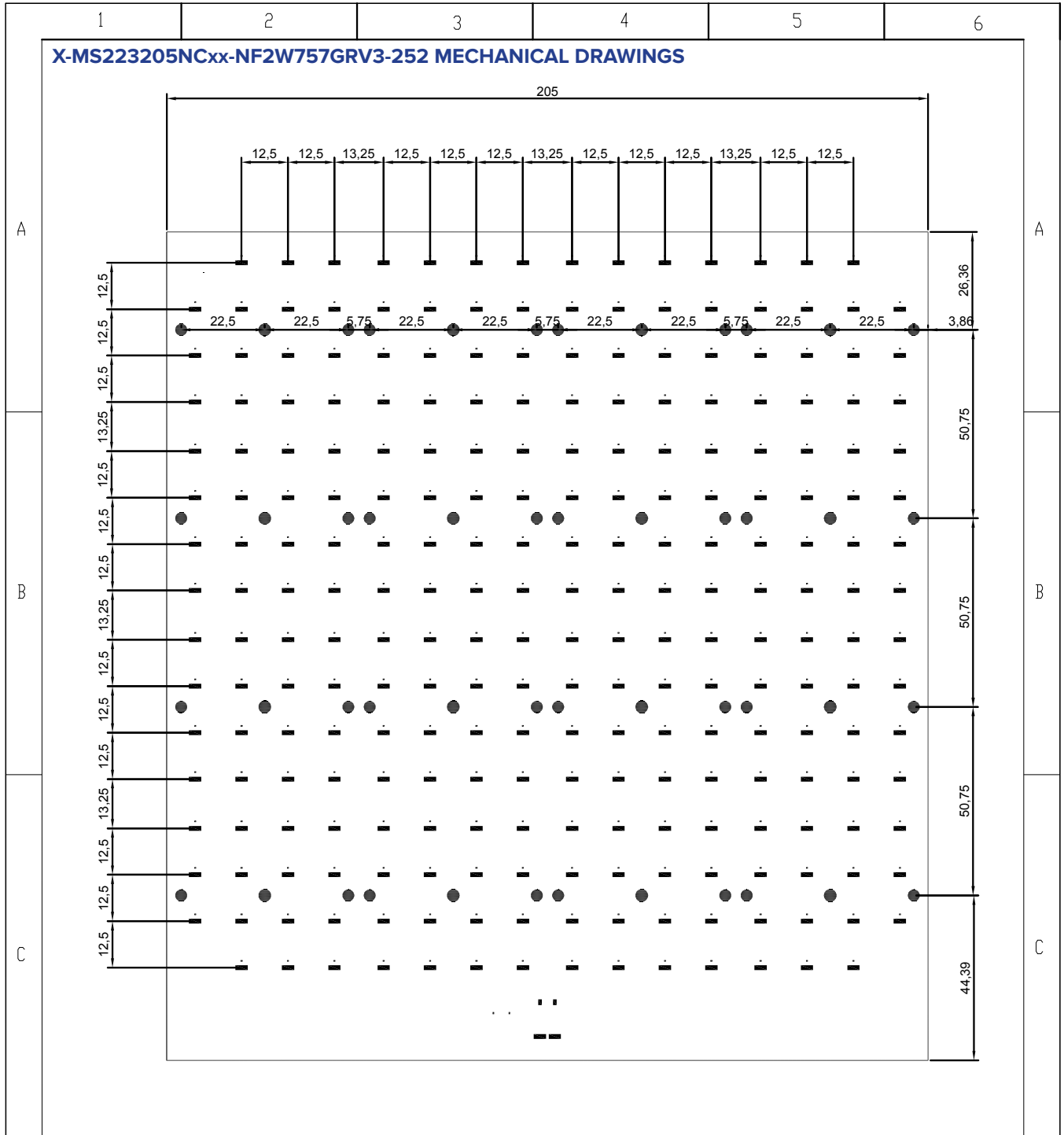
DRIVING CURRENT VS LUMEN OUTPUT SPECIFICATION

Common Characteristic [@Tj : 85°C] ;			
Module Code	X-MS223205NCxx-NF2W757GRV3-252		
PCB Material	ALU	Electrical Connection	
Operating Temperature (°C)	-40 ~ +85	Parallel	6
Storage Temperature (°C)	-40 ~ +55	Series	42
Thermal Conductivity (W/m-K)	1,5>	LED Quantity	252
LED			
NF2W757GR-V3_R8000			
Correlated Color Temperature (CCT)	4000K		
Color Rendering Index (CRI)	80+		
Module Operating Voltage (V)	243,60	249,90	260,40
Module Operating Current (mA)	500	700	1050
Branch Operating Current (mA)	83	117	175
Module Power (W)	121,80	174,93	273,42
Module Light Output (lm)	18.514	24.490	34.998
Module Efficiency (lm/W)	152	140	128
LED			
3030 2D-SQ			
Correlated Color Temperature (CCT)	4000K		
Color Rendering Index (CRI)	80+		
Module Operating Voltage (V)	250,74	256,20	264,60
Module Operating Current (mA)	500	700	1050
Branch Operating Current (mA)	83	117	175
Module Power (W)	125,37	179,34	277,83
Module Light Output (lm)	20.686	28.336	38.341
Module Efficiency (lm/W)	165	158	138

The table below shows how to Module Light Output changes depending on CCT (°K)


LED	Lumen Output Multiplier				
	2700°K (CRI 80)	3000°K (CRI 80)	4000°K (CRI 80)	5000°K (CRI 80)	6500°K (CRI 80)
NF2W757GR-V3_R8000	0,875	0,916	1	1	1
3030 2D-SQ	0,9	1	1,08	1,08	1,08

Relative luminous intensity versus CCT (°K)



SERBEST ÖLÇÜ TOLERANSLARI -DIN 2768-1 / General Tolerances for linear and angular dimensions (DIN ISO 2768-1)

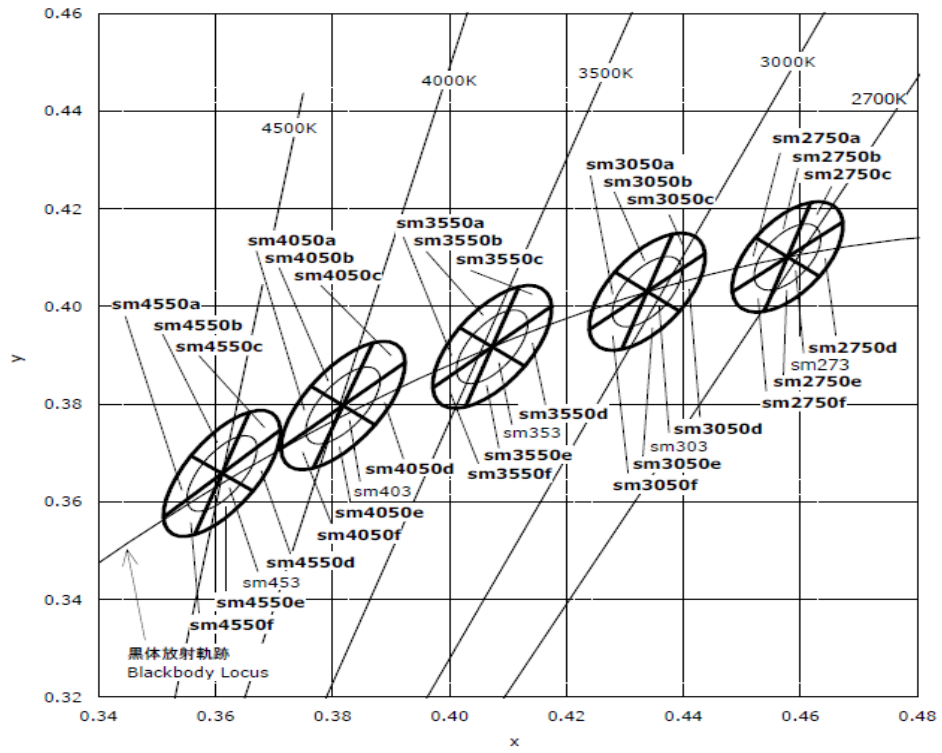
0.5 up to 3mm	over 3 up to 6mm	over 6 up to 30mm	over 30 up to 120mm	over 120 up to 400mm	over 400 up to 1000mm
± 0.1	± 0.1	± 0.2	± 0.3	± 0.5	± 0.8

Stock code No		MALZEME (MATERIAL)	AGIRLIK (WEIGHT)		
Revision	00	XXX	XXX		
Date	10.12.2019	TLS-001-15S223205NC-252		OLÇEK / SCALE	A4
Sheet					
Drawn By	Kaan ALTINTEN				
Checked By	Ibrahim OKMEN				
Approved By	Mesut CINAR				

TLS Teknoloji Sanayi ve Dis Ticaret A.S

This drawing is our property. It cant be reproduced or communicated without our written agreement.

CCT AND BINNING INFORMATION



DATASHEET

X-MS223205NCxx-NF2W757GRV3-252

LIFE TIME

MODEL NUMBER: NF2W757GR-V3

Test Summary:

Data Set	Case Temperature [°C]	Ambient Temperature [°C]	Drive Current [mA]	Lumen maintenance at 10K hours [%]	Chromaticity Shift ($\Delta u'v'$) at 10K hours	TM-21 Projection L ₇₀ (10K) [hours]	TM-21 Projection L ₈₀ (10K) [hours]	TM-21 Projection L ₉₀ (10K) [hours]
1	55	> 50	100	98.1	0.0014	> 60600	> 60600	> 60600
2	55	> 50	150	98.3	0.0017	> 60400	> 60400	> 60400
3	55	> 50	200	98.2	0.0020	> 60500	> 60500	48300
4	85	> 80	100	96.4	0.0014	> 60600	> 60600	52500
5	85	> 80	150	96.3	0.0020	> 60400	> 60400	38800
6	85	> 80	200	93.9	0.0035	55900	35300	17100
7	105	> 100	100	92.3	0.0019	> 60600	43700	15500
8	105	> 100	150	93.4	0.0027	> 60400	57800	21000
9	105	> 100	200	90.7	0.0034	42800	26200	11600

LEGAL NOTICE

Product information provided by TLS Teknoloji Sistemleri San ve Dış Tic AŞ ("TLS") in this document is believed to be correct and accurate. TLS reserves the right to change/correct the specifications and other data or information relating to products without notice but TLS accepts no liability for errors that may appear in this document, howsoever occurring, or liability arising from the use or application of any information or data provided herein. Neither the supply of such information, nor the purchase or use of products conveys any licence or permission under patent, copyright, trademark or other intellectual property right of TLS or third parties.

Products sold by TLS are subject to its standard Terms and Conditions of Sale that are available on request. No warranty is given that products do not infringe the intellectual property rights of third parties, and furthermore, the use of products in certain ways or in combination with TLS, or non-TLS furnished equipments/components may infringe intellectual property rights of TLS.

The purpose of this document is to provide information only and it may not be used, applied or reproduced (in whole or in part) for any purpose nor be taken as a representation relating to the products in question. No warranty or guarantee express or implied is made concerning the capability, performance or suitability of any product, and information concerning possible applications or methods of use is provided for guidance only and not as a recommendation. The user is solely responsible for determining the performance and suitability of the product in any application and checking that any specification or data it seeks to rely on has not been superseded.

Products are intended for normal commercial applications. For applications requiring unusual environmental requirements, extended temperature range, or high reliability capability (e.g. military, or medical applications), special processing/testing/conditions of sale may be available on application to TLS.

CONTACT

TLS Teknoloji Sistemleri San ve Dış Tic AŞ

Akçaburgaz Mahallesi 3080. Sokak No:5 Esenyurt / İstanbul / TURKEY

info@tsteknoloji.com
+90 444 27 33