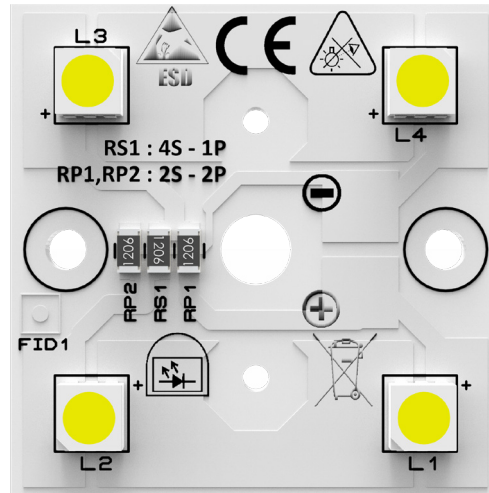




## PRODUCT PHOTO



## SPECIFICATIONS

- Default driving method is constant current input
- CCT Range from 2200K up to 6500K
- This modul can be used 4 series x 1 parallels or 2 series x 2 parallels options.
- Luminous flux range from 500 lm to 3150 lm
- Efficacy of the module up to 210 lm/W
- CRI 70 is standard, CRI 80 and CRI 90 are available
- Outstanding system color tolerance MacAdam 3 over the full operating area
- Simple installation (e.g. screw)
- Long life-time > 60,000 hours
- 5 years guarantee at specified conditions



For your orders please call us:  
**+90 444 27 33**

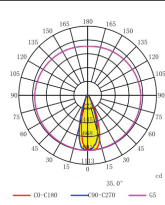
## APPLICATIONS



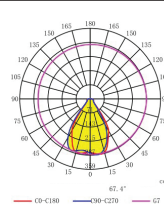
Street Lighting

Industrial Lighting

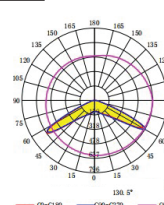
## PHOTOMETRY



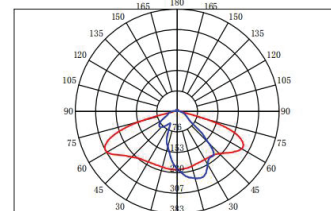
TLS04NI-5050-60-IP



TLS04NI-5050-90-IP



TLS04NI-5050-150-IP

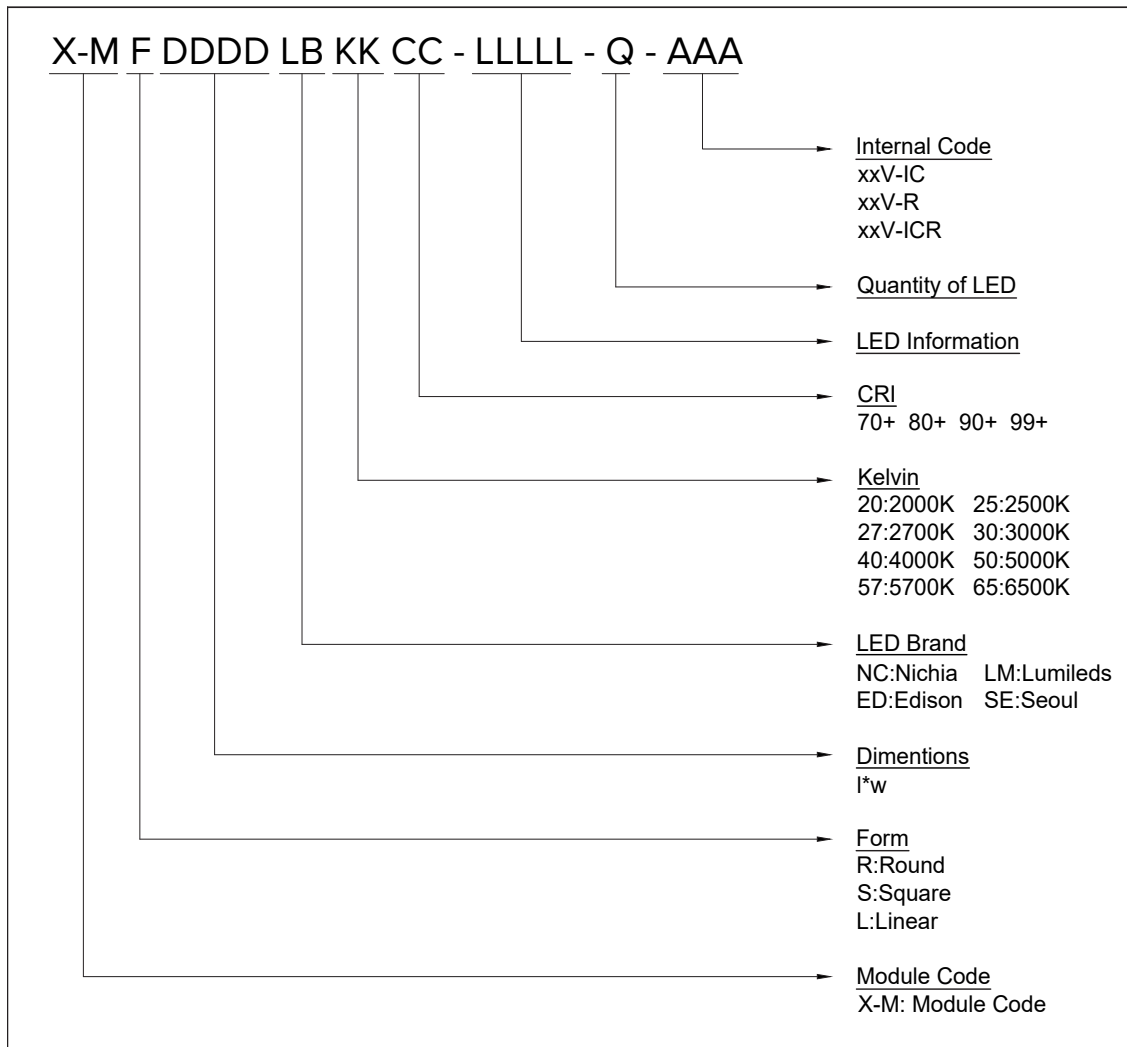


TLS04NI-5050-STL-IP

## TECHNICAL DATA

Beam Angle	120°		
Ambient temperature range	-25° ~ +55°C		
Tc max	85°C		
	<b>Lumileds 5050 HE</b>	<b>Lumileds 5050 Round</b>	<b>ETI 5050</b>
Max. DC forward current	800mA	800mA	1000mA
Typical voltage of LED Module at max current	25,6V	26,4V	25,6V
Insulation test voltage	2kV	2kV	2kV
ESD classification	Class 1	Class 1	Class 1
Risk group (EN 62471:2008)	2	2	2
Type of protection	IP00	IP00	IP00

## ORDERING INFORMATIONS



## DRIVING CURRENT VS LUMEN OUTPUT SPECIFICATION

Common Characteristic [@Tj] : 85°C ;			
Module Code	X-MS3838LM4070-5050-4		
PCB Material	ALU	Electrical Connection	
Operating Temperature (°C)	-40 ~ +100	Parallel	1
Storage Temperature (°C)	-40 ~ +55	Series	4
Thermal Conductivity (W/m-K)	1>	LED Quantity	4
<b>LED Lumileds 5050 HE</b>			
Correlated Color Temperature (CCT)	4000K		
Color Rendering Index (CRI)	70+		
Module Operating Voltage (V)	22	23	23
Module Operating Current (mA)	250	350	500
Branch Operating Current (mA)	250	350	500
Module Power (W)	5,56	7,94	11,66
Module Light Output (lm)	1.168	1.596	2.204
Module Efficiency (lm/W)	210	201	189
<b>LED Lumileds 5050 Round</b>			
Correlated Color Temperature (CCT)	4000K		
Color Rendering Index (CRI)	70+		
Module Operating Voltage (V)	22	23	23
Module Operating Current (mA)	250	350	500
Branch Operating Current (mA)	250	350	500
Module Power (W)	5,57	7,98	11,74
Module Light Output (lm)	1.136	1.548	2.113
Module Efficiency (lm/W)	204	194	180
<b>LED ETI 5050</b>			
Correlated Color Temperature (CCT)	4000K		
Color Rendering Index (CRI)	70+		
Module Operating Voltage (V)	22	23	24
Module Operating Current (mA)	250	350	500
Branch Operating Current (mA)	250	350	500
Module Power (W)	5,50	8,05	12,00
Module Light Output (lm)	1.111	1.417	1.956
Module Efficiency (lm/W)	202	176	163

The table below shows how to Module Light Output changes depending on CCT (K)

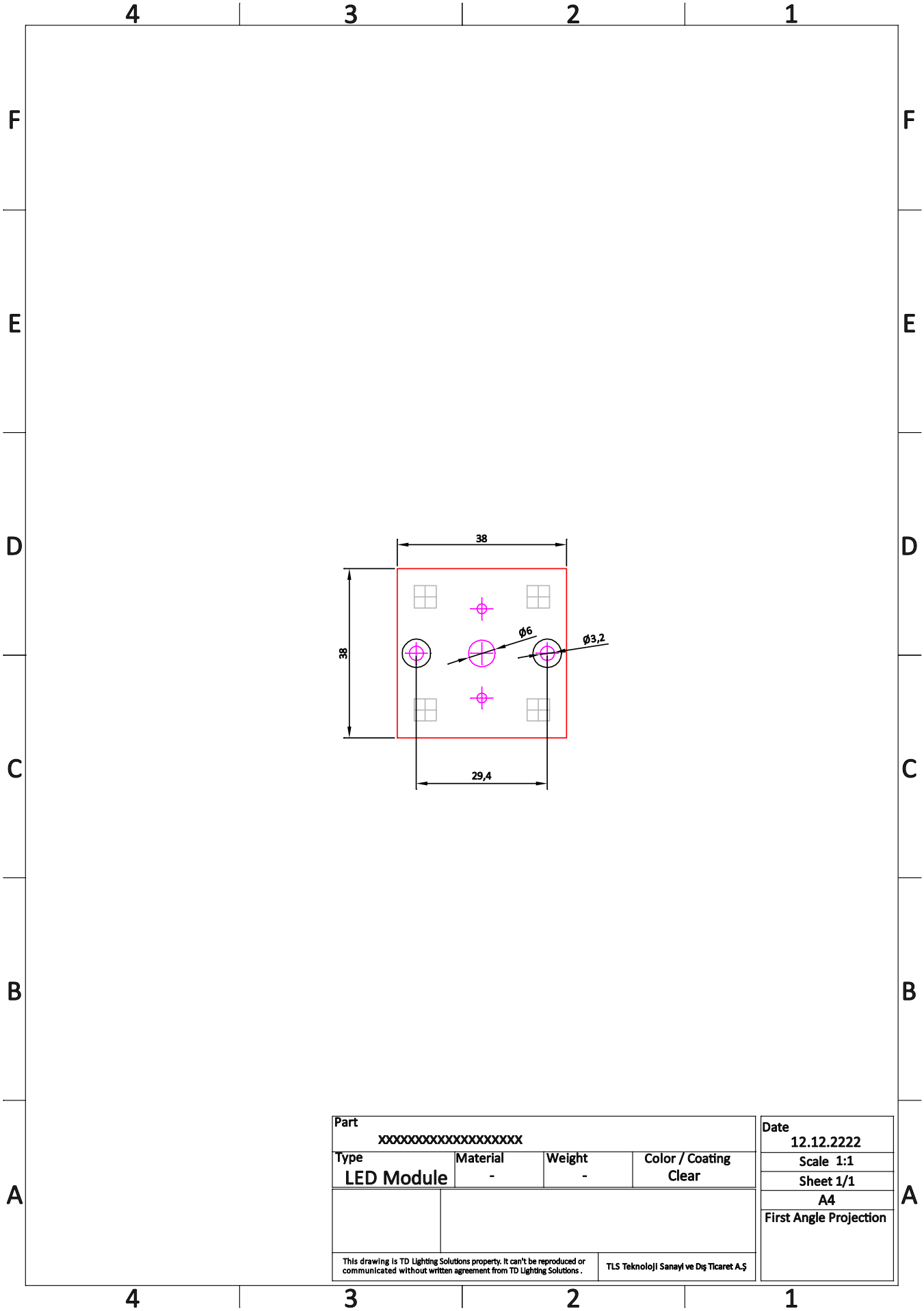
LED	Lumen Output Multiplier				
	2700K (CRI 80)	3000K (CRI 80)	4000K (CRI 80)	5000K (CRI 80)	6500K (CRI 80)
Lumileds 5050 HE	0,875	0,95	1	1	0,98
Lumileds 5050 Round	0,875	0,95	1	1	0,98
ETI 5050	0,875	0,92	1	1	0,96

Relative luminous intensity versus CCT (K)

X-MS3838LM4070-5050-4 MECHANICAL DRAWINGS

DATASHEET

X-MS3838LM4070-5050-4

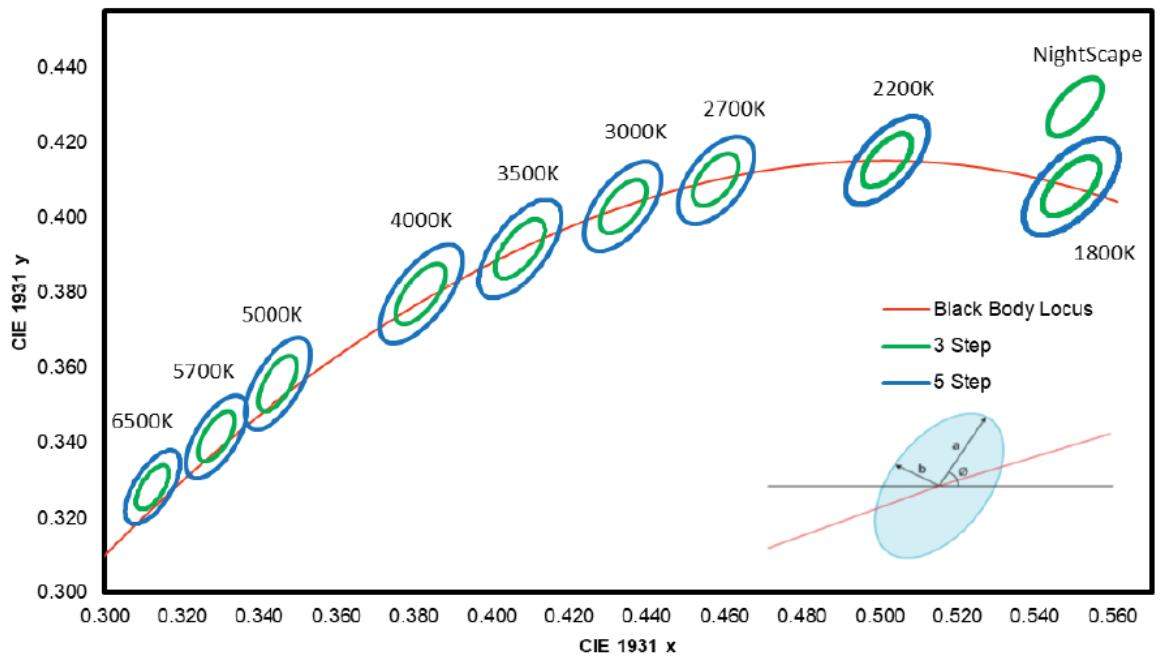


Part XXXXXXXXXXXXXXXXXXXX				Date 12.12.2222
Type LED Module	Material -	Weight -	Color / Coating Clear	Scale 1:1
				Sheet 1/1
				A4
				First Angle Projection
This drawing is TD Lighting Solutions property. It can't be reproduced or communicated without written agreement from TD Lighting Solutions .			TLS Teknoloji Sanayi ve Dış Ticaret A.Ş	



TD Lighting Solutions

CCT AND BINNING INFORMATION



LIFE TIME

MODEL NUMBER: LUXEON 5050



ILLUMINATION

# Lumen Maintenance Package for LUXEON 5050 (Square & Round LES)

(published: Apr 13, 2022)

Section 1 - Model Description, Model Covered, Energy Star  
LM-80 Cover Sheet and TM-21-11 Data

Section 2 - LM-80 Test Reports

This report issued to TD Elektronik

## LEGAL NOTICE

Product information provided by TLS Teknoloji Sistemleri San ve Dış Tic AŞ ("TLS") in this document is believed to be correct and accurate. TLS reserves the right to change/correct the specifications and other data or information relating to products without notice but TLS accepts no liability for errors that may appear in this document, howsoever occurring, or liability arising from the use or application of any information or data provided herein. Neither the supply of such information, nor the purchase or use of products conveys any licence or permission under patent, copyright, trademark or other intellectual property right of TLS or third parties.

Products sold by TLS are subject to its standard Terms and Conditions of Sale that are available on request. No warranty is given that products do not infringe the intellectual property rights of third parties, and furthermore, the use of products in certain ways or in combination with TLS, or non-TLS furnished equipments/components may infringe intellectual property rights of TLS.

The purpose of this document is to provide information only and it may not be used, applied or reproduced (in whole or in part) for any purpose nor be taken as a representation relating to the products in question. No warranty or guarantee express or implied is made concerning the capability, performance or suitability of any product, and information concerning possible applications or methods of use is provided for guidance only and not as a recommendation. The user is solely responsible for determining the performance and suitability of the product in any application and checking that any specification or data it seeks to rely on has not been superseded.

Products are intended for normal commercial applications. For applications requiring unusual environmental requirements, extended temperature range, or high reliability capability (e.g. military, or medical applications), special processing/testing/conditions of sale may be available on application to TLS.

## CONTACT

### **TLS Teknoloji Sistemleri San ve Dış Tic AŞ**

Akçaburgaz Mahallesi 3080. Sokak No:5 Esenyurt / İstanbul / TURKEY

info@tsteknoloji.com  
+90 444 27 33