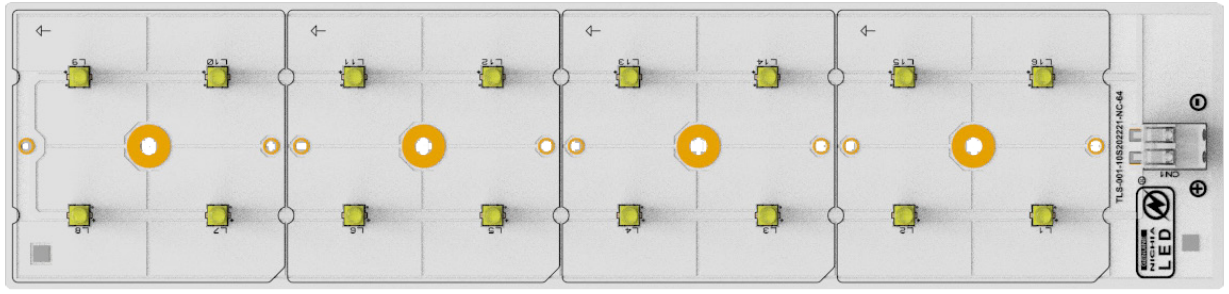


PRODUCT PHOTO



SPECIFICATIONS

- Default driving method is constant current input
- CCT Range from 2700K up to 6500K
- This module can be used as 16 series.
- Luminous flux range from 2500 lm to 9459 lm
- Efficacy of the module up to 180 lm/W
- CRI 80 is standard. CRI 70 and CRI 90 is available.
- Outstanding system color tolerance MacAdam 3 over the full operating area
- Simple installation (e.g. screw)
- Long life-time > 60,000 hours
- 5 years guarantee at specified conditions



For your orders please call us:

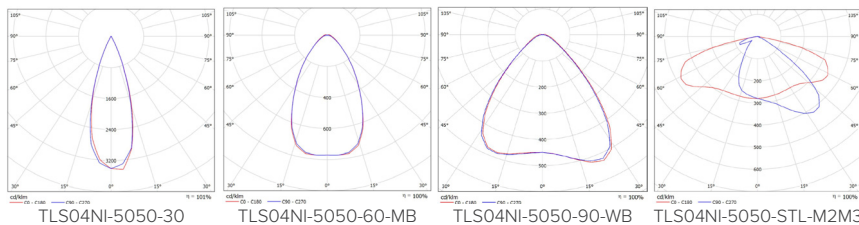
+90 444 27 33

APPLICATIONS



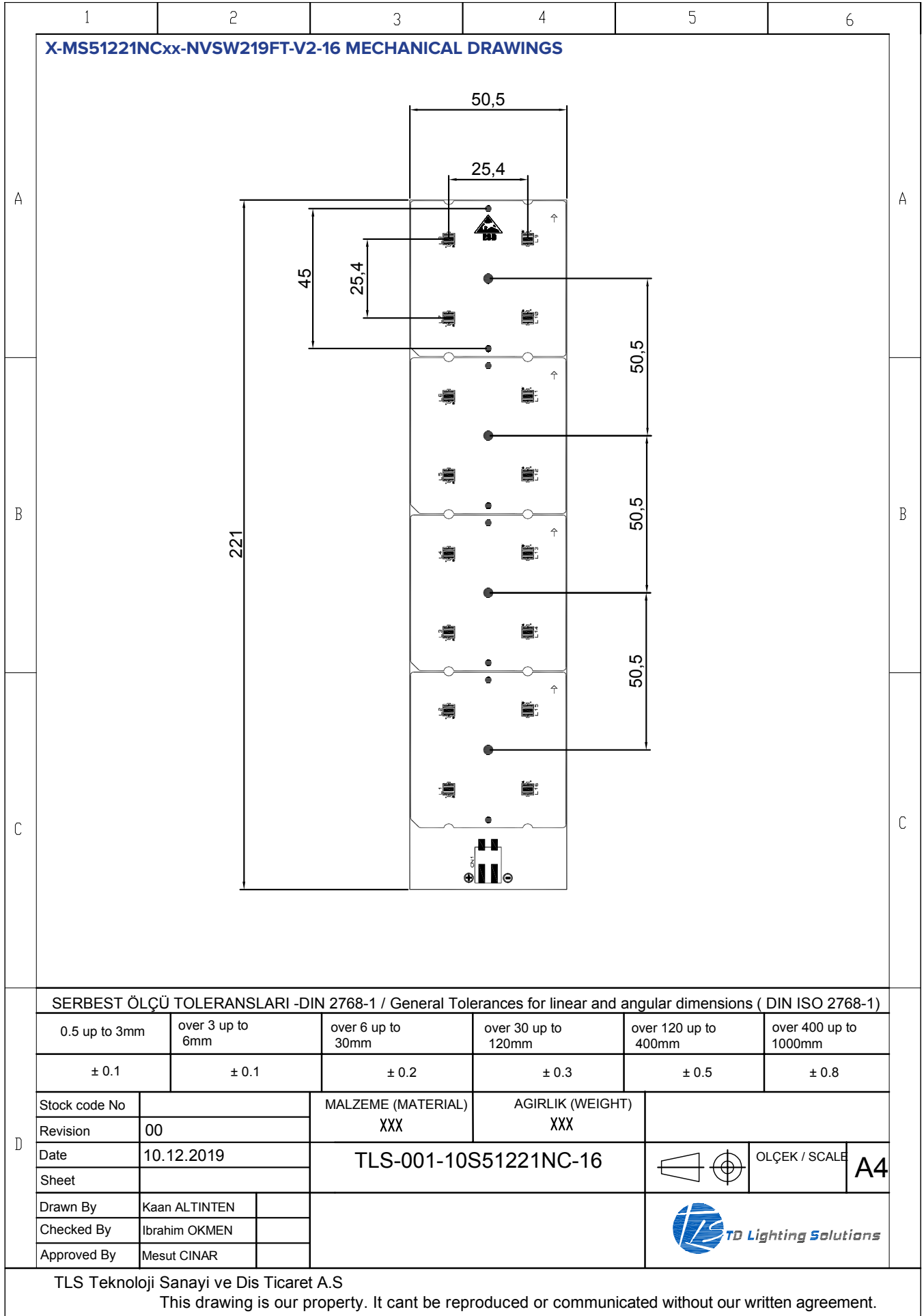
Street Lighting High Bay Lighting Flood Lighting

PHOTOMETRY



DRIVING CURRENT VS LUMEN OUTPUT SPECIFICATION

Common Characteristic [@T] : 85°C :			
LED Brand & Type	X-MS51221NCxx-NVSW219FT-V2		
PCB Material	ALU	Electrical Connection	
Operating Temperature (°C)	-40 ~ +85	Parallel	1
Storage Temperature (°C)	-40 ~ +55	Series	16
Thermal Conductivity (W/m-K)	1>	LED Quantity	16
LED NVSW219FT-V2_R70			
Correlated Color Temperature (CCT)	4000K		
Color Rendering Index (CRI)	70+		
Module Operating Voltage (V)	42,90	44,60	47,50
Module Operating Current (mA)	350	700	1400
Branch Operating Current (mA)	350	700	1400
Module Power (W)	15,01	31,30	66,40
Module Light Output (lm)	2.768	5.225	9.454
Module Efficiency (lm/W)	184	167	142
LED NVSW219GL_R70			
Correlated Color Temperature (CCT)	4000K		
Color Rendering Index (CRI)	80+		
Module Operating Voltage (V)	47,00	48,00	49,00
Module Operating Current (mA)	350	700	1400
Branch Operating Current (mA)	350	700	1400
Module Power (W)	15,10	31,90	69,20
Module Light Output (lm)	3.043	5.782	10.634
Module Efficiency (lm/W)	202	181	154



LEGAL NOTICE

Product information provided by TLS Teknoloji Sistemleri San ve Dış Tic AŞ ("TLS") in this document is believed to be correct and accurate. TLS reserves the right to change/correct the specifications and other data or information relating to products without notice but TLS accepts no liability for errors that may appear in this document, howsoever occurring, or liability arising from the use or application of any information or data provided herein. Neither the supply of such information, nor the purchase or use of products conveys any licence or permission under patent, copyright, trademark or other intellectual property right of TLS or third parties.

Products sold by TLS are subject to its standard Terms and Conditions of Sale that are available on request. No warranty is given that products do not infringe the intellectual property rights of third parties, and furthermore, the use of products in certain ways or in combination with TLS, or non-TLS furnished equipments/components may infringe intellectual property rights of TLS.

The purpose of this document is to provide information only and it may not be used, applied or reproduced (in whole or in part) for any purpose nor be taken as a representation relating to the products in question. No warranty or guarantee express or implied is made concerning the capability, performance or suitability of any product, and information concerning possible applications or methods of use is provided for guidance only and not as a recommendation. The user is solely responsible for determining the performance and suitability of the product in any application and checking that any specification or data it seeks to rely on has not been superseded.

Products are intended for normal commercial applications. For applications requiring unusual environmental requirements, extended temperature range, or high reliability capability (e.g. military, or medical applications), special processing/testing/conditions of sale may be available on application to TLS.

CONTACT

TLS Teknoloji Sistemleri San ve Dış Tic AŞ

Akçaburgaz Mahallesi 3080. Sokak No:5 Esenyurt / İstanbul / TURKEY

info@tsteknoloji.com
+90 444 27 33